

## PRINTABLE INFO SHEET

**Series: Aurora Classic Ranch  
Modular  
Model: AW462A Oakley**



## About This Model

**Style: Ranch / Bedrooms: 3 / Bathrooms: 2 / Square Feet: 1945**

## CUSTOMER CONTACT

Notes:

---

---

---

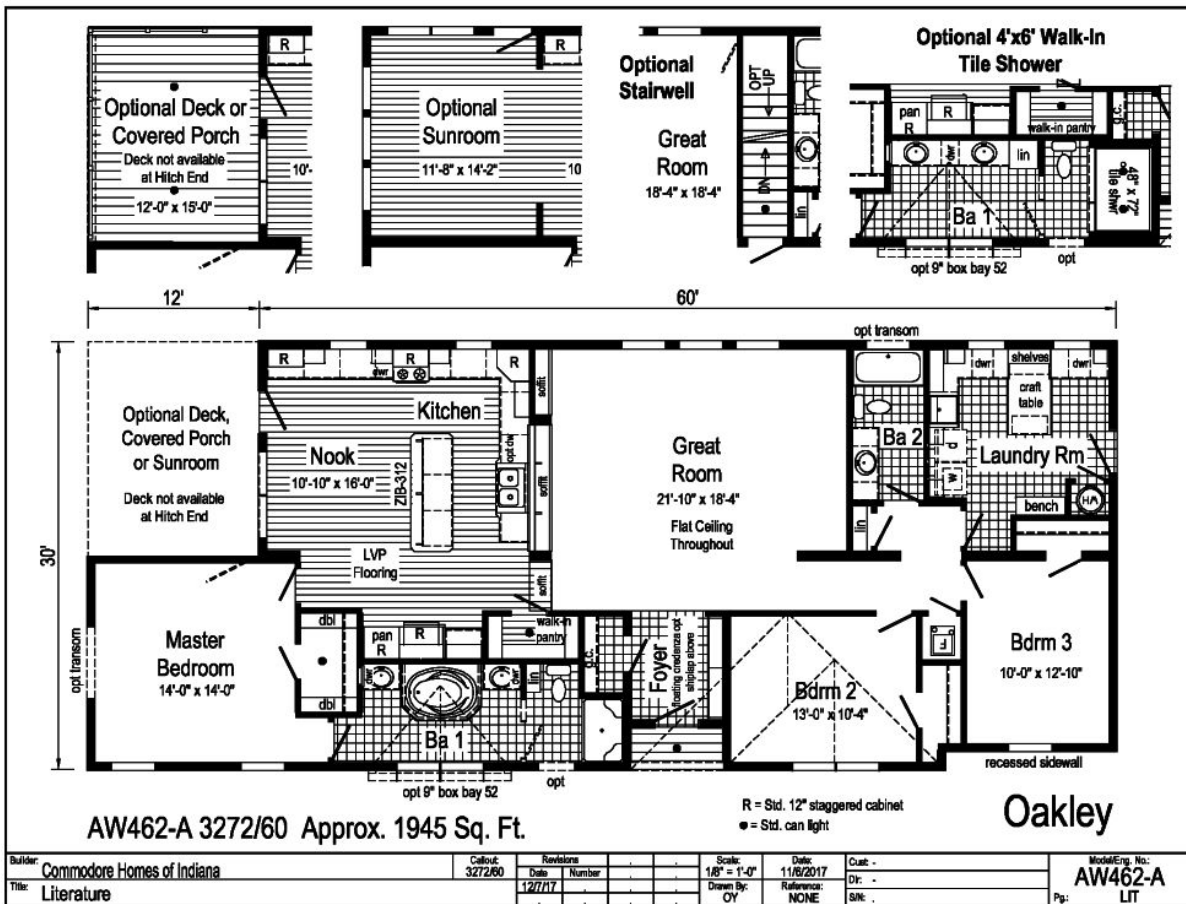
---

# PRINTABLE INFO SHEET

Series: Aurora Classic Ranch  
 Modular  
 Model: AW462A Oakley



## Floorplan



## CUSTOMER CONTACT

Notes:

---



---



---



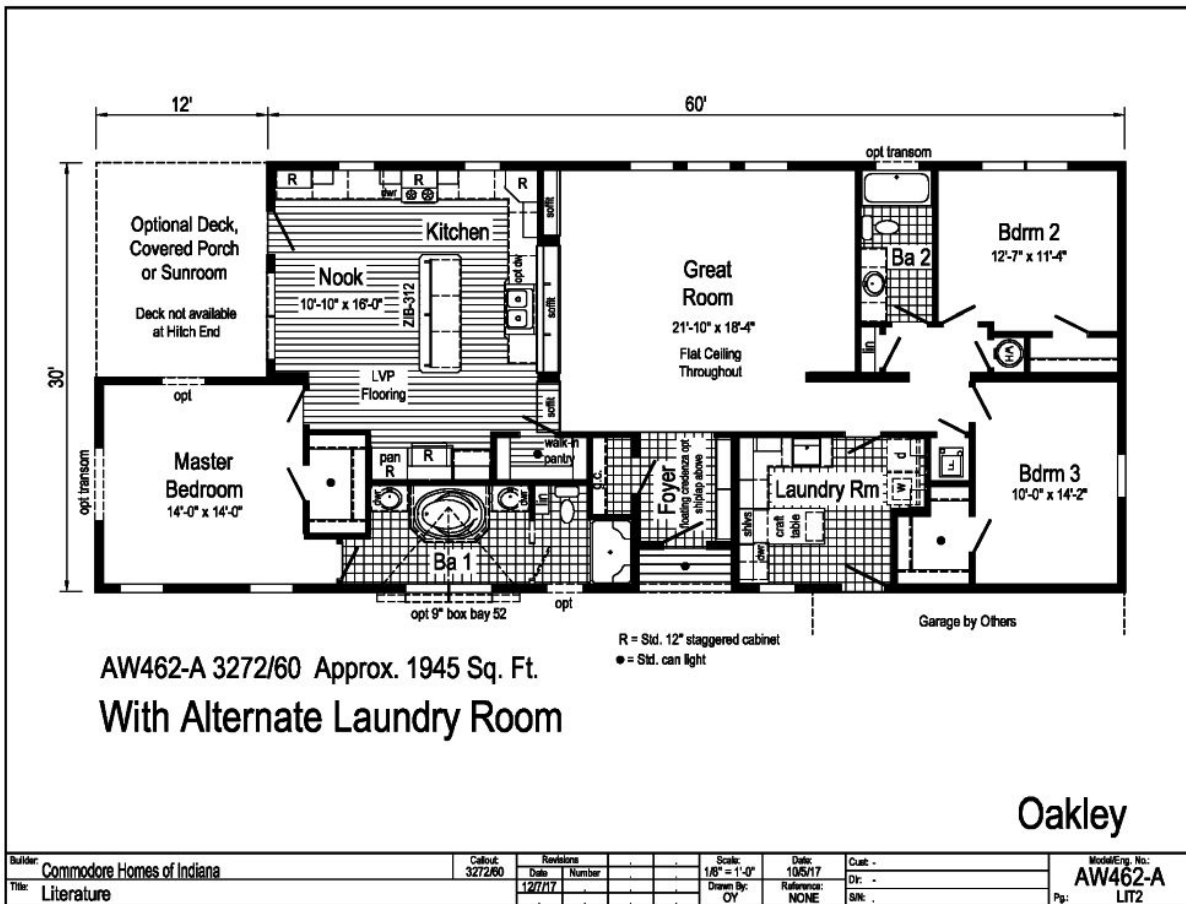
---

# PRINTABLE INFO SHEET

Series: Aurora Classic Ranch  
 Modular  
 Model: AW462A Oakley



## Floorplan



## CUSTOMER CONTACT

Notes: \_\_\_\_\_

\_\_\_\_\_

\_\_\_\_\_

\_\_\_\_\_

# PRINTABLE INFO SHEET

**Series: Aurora Classic Ranch  
Modular  
Model: AW462A Oakley**



## Standards & Features

### Interior

Smooth Drywall Throughout  
Flat Ceiling with 8' Sidewall Throughout  
Stipple Ceiling  
Coveless Ceiling Joints  
Brushed Nickel Langford 5-Arm Dining Room Light  
Brushed Nickel Langford 3-Arm Nook Light  
Glass Light Shades Throughout  
6-Panel Interior Doors Through-out  
Pre-Hung Door Jambs  
Mortise Door Hinges  
Metal Interior Passage Sets  
Floor Mount Door Stops  
Smoke Detectors with Battery Back-Up  
Wire Shelving in All Closets  
Brushed Nickel Interior Package  
Includes: Door Handles, Hinges, Huntington  
Brass Metal Faucets and Cabinet Hardware

### Exterior

Prairie Lantern Light at Front Door  
Patina Square Light at Rear Door  
Two GFI-Protected Exterior Receptacles  
Vinyl Dutch Lap Siding dropped down to  
Cover Sill Plate  
O.S.B. Sheathing with House Wrap Under Siding  
5/12 Roof Pitch  
7/12 Roof Pitch on AU187A  
16" Fixed Eaves on All 28 and 42 wides  
12" Fixed Eaves on All 32 wides  
Architectural Shingles  
Ridgevent Roof Ventilation System

### Exterior (continued)

3/0 x 6/8 Fiberglass 4-Lite Classic Oak Front Door  
with Deluxe Dexter Door Handle with Deadbolt  
3/0 x 6/8 Fiberglass 6-Panel Rear Door Handle  
with Deadbolt  
Keyed-Alike Locksets  
Vinyl Insulated Windows with Low-E Glass  
and Grids  
Double and Triple Windows are Mullied  
12" Raised Panel Shutters on Front Door Side

### Construction

2x10 Floor System on 16"  
Centers\*\*  
3/4" Tongue and Groove OSB Floor Decking  
2x10 Double Rim Joist  
2x6 Exterior Walls on 16" Centers\*\*  
2x4 Interior Walls on 16" Centers\*\*  
40# Roof Load

### Kitchen

High Rise Kitchen Sink Faucet  
GE 30" Free Standing Gas Range with Electronic  
Ignition  
Power Range Hood with Light  
GE 18 Cubic Foot, No-Frost Refrigerator with  
Ice Maker  
Refrigerator Surround  
Stainless Steel Single Bowl Sink (33x22x8)  
USB Recept

### Baths

60" One-Piece Fiberglass Tub/Showers  
One-Piece Fiberglass Shower with Glass Door in

## CUSTOMER CONTACT

Notes:

---

---

---

---

# PRINTABLE INFO SHEET



**Series: Aurora Classic Ranch  
Modular  
Model: AW462A Oakley**

## Standards & Features (continued)

### Baths (continued)

- Glamour Baths
- Fiberglass Drop-in Tub in Glamour Baths
- Tub Overflows
- 1.6 Gallon Per Flush Elongated Toilets
- China Stool, Tank, and Lid
- China Sinks with Overflows and Pop-Up Drains
- Lighted Vent Fan in Each Bath
- Plant Made Recessed Medicine Cabinet in Master Bath in Most Models
- Anti-Scald Valves on Showers & Tubs

### Cabinetry

- Evermore Custom Cabinetry (KCMA Certified)
- Hardwood Oak or Driftwood Mission Flat Panel Cabinet Doors
- Hardwood Cabinet Stiles
- Contemporary Cabinet Hardware
- Concealed Cabinet Hinges
- Crown and Under Cabinet Moulding on Overhead Cabinets
- 30"/42" Staggered Height Overhead
- Lined Overhead Cabinets
- Adjustable Shelves in Base and Overhead Cabinets
- Refrigerator Surround with 24" Deep Overhead Cabinet
- Single Drawer Over Double Door Base Cabinets
- Dovetail Drawer Construction
- Full Extension 75# Drawer Guides on all Drawers
- Base and Center Shelves in Base Cabinets
- Wilson Art Laminate Countertops with Bevel or Crescent Edging
- 4" Wilson Art Laminate Backsplash
- Tip-Out Trays at Sink
- Base Shelf in Vanities

### Cabinetry (continued)

36" High Vanities in Master Bath

### Utilities

- 200 AMP Electrical Service & 40/40 Box
- Copper Wiring Throughout
- 95 Plus Efficient Gas Furnace with:
  - 6-Panel Furnace Door
  - Fiberglass Heat Ducts
  - Perimeter Heat System
  - Ceiling Air Return System
- Air Conditioning Thermostat with 5-Wires
- 40 Gallon Electric Water Heater with Pan
- Main Water Line Shut-Off Valve
- Water Shut-Off Valves-Where Accessible
- Plumb and Wire for Washer
- Wire and Vent for Dryer
- MO-89 Cabinet Over Washer & Dryer Area
- One Exterior Water Faucet

### Insulation

- R-19 Fiberglass Insulation in Walls
- R-38 Avg. Blown Insulation in Ceiling

### Flooring

- Choice of Various Styles of SHAW Carpet with R2X Soil and Stain Resistance
  - 3 Styles: New Day, Believe It, and Adaptation
  - Choice of 12 Standard color options and numerous optional colors
  - Standard Carpets are all 25 oz
- Rebond Carpet Pad with Tackstrip Carpet Installation
- No-Wax Vinyl Floor Coverings, featuring Congoleum
- Entry Foyer Vinyl Flooring, featuring Congoleum

## CUSTOMER CONTACT

Notes: \_\_\_\_\_  
 \_\_\_\_\_  
 \_\_\_\_\_  
 \_\_\_\_\_

## PRINTABLE INFO SHEET

**Series: Aurora Classic Ranch**  
**Modular**  
**Model: AW462A Oakley**



## Standards & Features (continued)

### Bedrooms

Ceiling Lights  
Egress Window Each Bedroom  
Wire Shelving in Wardrobes  
30" Interior Passage Doors  
Switched Light in All Walk-In Closets

### Energy Efficient Standards Include:

- Low-E Vinyl Insulated Windows
- 95+ Efficient Gas Furnace
- Fiberglass Heat Ducts
- Fiberglass Exterior Doors
- R-38 ceiling insulation (avg.) and R-19 wall insulation

## CUSTOMER CONTACT

Notes:

---

---

---

---